

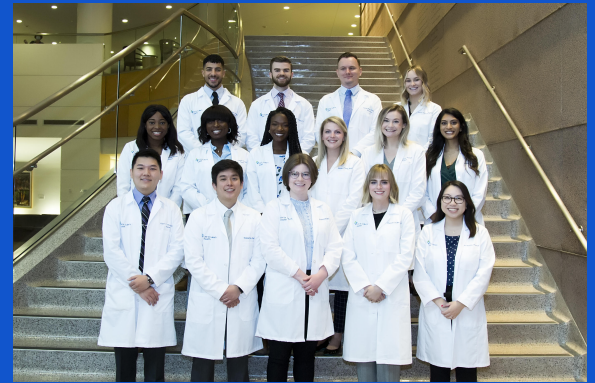


Baylor St. Luke's Medical Center

Baylor
College of
Medicine

The mission of the Department of Pharmacy at Baylor St. Luke's Medical Center is to provide and advance patient care through collaboration, continual optimization of pharmacy services, research and education. Overall, we also strive to uphold our hospital's mission of creating a healthier future for all - inspired by faith, driven by innovation, and powered by our humanity.

Virtual Open House: November 18, 2022 at 2:00-3:30 PM CST and December 16, 2022 at 2:00-3:30 PM CST



Meet with our Program Directors and our current PGY1 and PGY2 residents to ask about their experiences so far at BSLMC!

Showcase Agenda:

- 2:00-2:30
 - General information session
- 2:30-3:30
 - PGY1 Program Room
 - PGY2 Program Room
 - Program Directors and Preceptors Room

Current Residency Programs at BSLMC (# positions):

- PGY1 Pharmacy Practice (6)
- PGY2 Cardiology Pharmacy (1)
- PGY2 Critical Care Pharmacy (2)
- PGY2 Solid Organ Transplant Pharmacy (2)
- PGY1/2 Health System Pharmacy Administration and Leadership (2)
- Two-year Infectious Disease Fellowship (2)

