

# CHI St. Luke's – Brazosport Hospital

## 2021 Community Health Implementation Strategy






Adopted June 2021



# Table of Contents

- At-a-Glance Summary ..... 3
- Our Hospital and the Community Served..... 5
  - About CHI St. Luke’s Hospital – Brazosport ..... 5
  - Our Mission..... 5
  - Financial Assistance for Medically Necessary Care ..... 5
  - Description of the Community Served..... 5
- Community Assessment and Significant Needs ..... 7
  - Community Health Needs Assessment ..... 7
  - Significant Health Needs..... 7
    - Significant Needs the Hospital Does Not Intend to Address..... 8
- 2021 Implementation Strategy ..... 9
  - Creating the Implementation Strategy..... 9
  - Strategy by Health Need ..... 10
  - Program Digests ..... 13
- Hospital Board Roster..... 16

# At-a-Glance Summary

<p><b>Community Served</b></p> 	<p>CHI St. Luke’s Health – Brazosport Hospital is located in Lake Jackson, Texas, within the Greater Houston metropolitan area. The hospital service area includes the cities of: Angleton, Brazoria, Clute, Damon, Danbury, Freeport, Lake Jackson, Liverpool, Manvel, Rosharon, Sweeny and West Columbia.</p>
<p><b>Significant Community Health Needs Being Addressed</b></p> 	<p>The significant community health needs the hospital is helping to address and that form the basis of this document were identified in the hospital’s most recent Community Health Needs Assessment (CHNA). Needs being addressed by strategies and programs are:</p> <ul style="list-style-type: none"> <li>• Access to health care</li> <li>• Chronic diseases (including overweight and obesity)</li> <li>• Mental health</li> <li>• Preventive practices (including COVID-19)</li> </ul>
<p><b>Strategies and Programs to Address Needs</b></p> 	<p>The hospital intends to take actions and to dedicate resources to address these needs, including:</p> <ul style="list-style-type: none"> <li>• Access to health care: financial assistance, flu shots and health fairs</li> <li>• Chronic disease (including overweight and obesity): community health education, support groups, the Mermaid Project, dietary consultations and health fairs</li> <li>• Mental health: community health education and mental health awareness activities</li> <li>• Preventive practices (including COVID-19): flu shots and immunizations, health fairs, and screenings</li> </ul>
<p><b>Anticipated Impact</b></p> 	<p>These activities will:</p> <ul style="list-style-type: none"> <li>• Increase access and reduced barriers to health care for the medically underserved.</li> <li>• Increase identification and treatment of chronic diseases and improved compliance with chronic disease prevention and management recommendations.</li> <li>• Increase awareness and treatment of mental health issues.</li> <li>• Increase the identification and treatment of disability and disease and increase individuals’ compliance with preventive care recommendations.</li> </ul>
<p><b>Planned Collaboration</b></p> 	<p>St. Luke’s Brazosport anticipates collaborating with the following facilities and organizations to address this priority need: Baylor School of Medicine, Susan G. Komen Foundation, American Cancer Association, Brazosport College, Community Health Network, Health South Texas, Brazosplace, area hospitals, Live Oak Clinic, Brazos County Health Department, NAMI Gulf Coast, Brazoria County Mental Health Division, and school districts.</p>

This document is publicly available online at [www.stlukeshealth.org/locations/brazosport-hospital/community-health-needs-assessment](http://www.stlukeshealth.org/locations/brazosport-hospital/community-health-needs-assessment).

Written comments on this report can be submitted to the Mission Integration and Spiritual Care office at 100 Medical Drive, Lake Jackson, TX 77566 or by e-mail to [Jerry.McDonald@brhstx.org](mailto:Jerry.McDonald@brhstx.org).

# Our Hospital and the Community Served

## About CHI St. Luke’s Hospital – Brazosport

CHI St. Luke’s Health – Brazosport Hospital is a member of Catholic Health Initiatives, which is a part of CommonSpirit Health.

St. Luke’s Health–Brazosport Hospital is located on a beautiful, 25-acre campus in Lake Jackson, Texas. Offering state-of-the-art diagnostic and comprehensive treatment services, our hospital is home to a 154-bed patient tower, level III trauma center, advanced cardiac care center, and full-service, multidisciplinary cancer center.

## Our Mission

As CommonSpirit Health, we make the healing presence of God known in our world by improving the health of the people we serve, especially those who are vulnerable, while we advance social justice for all.

## Financial Assistance for Medically Necessary Care

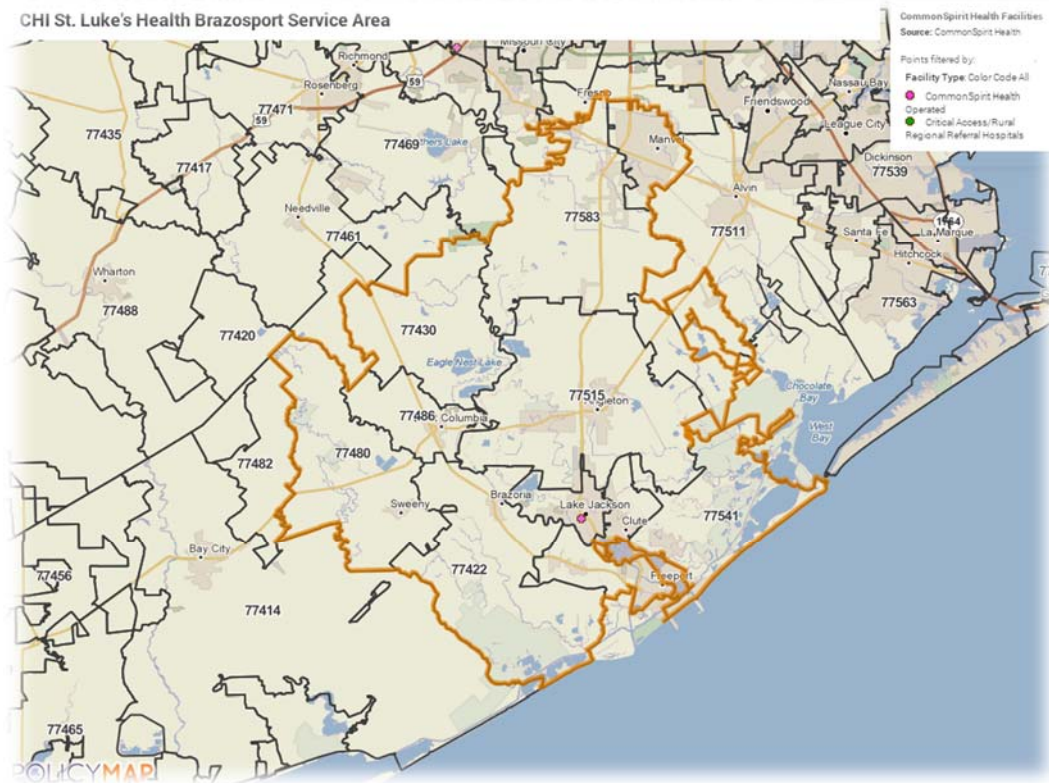
CHI St. Luke’s Health – Brazosport Hospital delivers compassionate, high quality, affordable health care and advocates for members of our community who are poor and disenfranchised. In furtherance of this mission, the hospital provides financial assistance to eligible patients who do not have the capacity to pay for medically necessary health care services, and who otherwise may not be able to receive these services. The financial assistance policy and a plain language summary of the policy are on the hospital’s web site.

## Description of the Community Served

CHI St. Luke’s Health – Brazosport Hospital is located at 100 Medical Drive, Lake Jackson, Texas, 77566. The hospital defines its service area to include the following cities, all located within Brazoria County: Angleton, Brazoria, Clute, Damon, Danbury, Freeport, Lake Jackson, Liverpool, Manvel, Rosharon, Sweeny and West Columbia. A summary description of the community is below. Additional details can be found in the CHNA report online.

The population of the CHI St. Luke’s Health Brazosport service area is 194,338. Children and youth, ages 0-17, make up 26.2% of the population, 61.7% are adults, ages 18-64, and 12.1% of the population are seniors, ages 65 and over. The largest portion of the population in the service area (48.4%) identifies as White/Caucasian, with 33.9% of the population identifying as Hispanic/Latino, 13.2% of the population as





Black/African American, and 2.9% of the population as Asian. 1.2% of individuals identify as multiracial (two-or-more races). In the service area, 73.5% of the population, 5 years and older, speak only English in the home, 23.4% speak Spanish, 1.8% speak an Asian/Pacific Islander language, and 0.8% speak an Indo-European language in the home.

Among the residents in the service area, 11.4% are at or below 100% of the federal poverty level (FPL) and 28.6% are at 200% of FPL or below. Educational attainment is a key driver of health. In the hospital service area, 15.2% of adults, 25 and older, lack a high school diploma, which is higher than the county rate (12.1%) and lower than the state rate (16.3%). 22% of area adults have a Bachelor's degree or higher college degree, which is lower than county (30%) and state (29.9%) rates.

## Community Assessment and Significant Needs

The hospital engages in multiple activities to conduct its community health improvement planning process. These include, but are not limited to, conducting a Community Health Needs Assessment with community input at least every three years, identifying collaborating community stakeholder organizations, describing anticipated impacts of program activities and measuring program indicators.

### Community Health Needs Assessment

The health issues that form the basis of the hospital's community health implementation strategy and programs were identified in the most recent CHNA report, which was adopted in May 2021. The CHNA contains several key elements, including:

- Description of the assessed community served by the hospital;
- Description of assessment processes and methods;
- Presentation of data, information and findings, including significant community health needs;
- Community resources potentially available to help address identified needs; and
- Discussion of impacts of actions taken by the hospital since the preceding CHNA.

Additional detail about the needs assessment process and findings can be found in the CHNA report, which is publicly available at [www.stlukeshealth.org/locations/brazosport-hospital/community-health-needs-assessment](http://www.stlukeshealth.org/locations/brazosport-hospital/community-health-needs-assessment) or upon request at the hospital's Healthy Communities or Community Benefit office.

### Significant Health Needs

The community health needs assessment identified the following significant community health needs:

- Access to health care – Access to a medical home and a primary care provider improve continuity of care and decrease unnecessary emergency room visits. 31.4% of adults in the Brazosport service area do not have a usual primary care provider. There are a number of identified barriers to accessing health care, including: lack of transportation, cultural and language issues, loss of insurance coverage from job losses as a result of COVID, lack of information on available resources, and a lack of specialists.
- Chronic diseases – The hospital service area has high rates of death from heart disease, stroke, liver disease and cancer. Co-morbidity factors for diabetes and heart disease are high blood pressure (hypertension) and high blood cholesterol. The percent of adults who reported being diagnosed with high blood pressure or high cholesterol was higher in the Brazosport service area than in the county.
- COVID-19 – In Brazoria County, there were 35,737 probable or confirmed cases of COVID-19 as of April 4, 2021. This represents a rate of 9,908.3 cases per 100,000 residents. As of the same date, 454 persons have died in the county due to COVID-19 complications, a rate of 125.9 deaths per 100,000 persons. Community stakeholders noted that COVID-19 has impacted how people

access health care services, making it more difficult. People are waiting until they get very sick before they come to the hospital or see a primary care provider.

- Dental care – Among Brazoria County adults, 41.7% did not access dental care in the prior year. This is a slight improvement over the state rate, where 42.2% of adults did not access dental care in the prior year. The likelihood of having seen a dentist in the past year, among high school students, falls off with age and grade level. White students were the most likely to say they had seen a dentist in the previous year (73.4%), with Black/African American students the least likely (57.2%). 65.8% of Hispanic and 66.4% of other students had seen a dentist in the past year.
- Economic insecurity – Among the residents in the service area, 11.4% are at or below 100% of the federal poverty level (FPL) and 28.6% are at 200% of FPL or below. These poverty and low-income rates are higher than county rates.
- Mental health – Frequent Mental Distress is defined as 14 or more bad mental health days in the last month. In the service area the rate of mental distress was 13.2% of adults, which was higher than in the county (12.9%) and the state (11.7%). Community stakeholders identified mental health issues as significant in the community. The pandemic has exacerbated the isolation, anxiety and depression felt by area residents. Seniors and teens are especially vulnerable.
- Overweight and obesity – Over a third of adults in the St. Luke’s Brazosport service area (36.1%) are obese and another third (33%) are overweight. 34.7% of Texas’ high school students are overweight (85<sup>th</sup> percentile or above for BMI by age and sex, but below the 95<sup>th</sup> percentile) or obese (95<sup>th</sup> percentile or above for BMI by age and sex). Combined rates of overweight and obesity were highest in Hispanic (38.3%) and Black/African American students (37.6%), followed by Other (31.2%) and White (27%) students.
- Preventive practices – The residents in the hospital service area did not meet the national Healthy People 2030 objectives for Pap smears, mammograms, colorectal cancer screening or adult flu vaccines. Community stakeholders noted that obtaining preventive health care and required screenings was an issue in the community. Accessing care and the cost of care were barriers to obtaining preventive care services.
- Substance use – Among adults in Texas, 14.4% reported being current smokers. Vapor products are now the most common nicotine product used by youth. 18.7% of high school students surveyed in Texas had used vapor products. Among adults, 18.2% in the service area reported having engaged in binge drinking in the previous 30 days. Among Texas 9<sup>th</sup> – 12<sup>th</sup> graders, 16.6% have used prescription pain medications obtained without a prescription and 6.3% had used inhalants.

## Significant Needs the Hospital Does Not Intend to Address

Taking existing organizational and community-based resources into consideration, the hospital is choosing to not address economic insecurity, dental care and substance use as identified in the CHNA. CHI St. Luke’s – Brazosport Hospital cannot address all the health needs in the community and must focus on areas where we have the greatest potential for impact and that also align with our mission, and prevent duplication of effort.



## 2021 Implementation Strategy

This section presents strategies and program activities the hospital intends to deliver, fund or collaborate with others to address significant community health needs over the next three years. It summarizes planned activities with statements on anticipated impacts and planned collaboration. Program Digests provide additional detail on select programs.

This report specifies planned activities consistent with the hospital’s mission and capabilities. The hospital may amend the plan as circumstances warrant. For instance, changes in significant community health needs or in community assets and resources directed to those needs may merit refocusing the hospital’s limited resources to best serve the community.

The anticipated impacts of the hospital’s activities on significant health needs are summarized below, and for select program initiatives are stated in Program Digests. Overall, the hospital anticipates that actions taken to address significant health needs will: improve health knowledge, behaviors, and status; increase access to needed and beneficial care; and help create conditions that support good health.

The hospital works to evaluate impact and sets priorities for its community health programs in triennial Community Health Needs Assessments.



## Creating the Implementation Strategy

CHI St. Luke’s – Brazosport Hospital is dedicated to improving community health and delivering community benefit with the engagement of its management team, board, clinicians and staff, and in collaboration with community partners.

The following criteria were used by the hospital to determine the significant health needs they will address in the Implementation Strategy:

- Is available to the public and serves low-income residents.
- Reduces barriers to accessing services.
- Addresses disparities in health status
- Enhances public health activities
- Increases knowledge and benefits the public.


St. Luke’s - Brazosport engaged internal leaders to examine the identified health needs according to these criteria. The CHNA served as the resource document for the review of health needs as it provided statistical data on the severity of issues and also included community input on the health needs. As well, the community prioritization of the needs was taken into consideration. As a result of the review of needs and application of the above criteria, the hospital chose to focus on: access to care, chronic diseases (including overweight and obesity), mental health and preventive practices (including COVID-19).



For each health need the hospital plans to address, the Implementation Strategy describes: actions the hospital intends to take, including programs and resources it plans to commit, anticipated impacts of these actions, and planned collaboration between the hospital and other organizations. In most cases, the strategies identified to address the selected needs are based on existing programs that have evidence of success.

## Strategy by Health Need

The tables below present strategies and program activities the hospital intends to deliver to help address significant health needs identified in the CHNA report. They are organized by health need and include statements of the anticipated impact and any planned collaboration with other organizations in the community.

 <b>Health Need: Access to Health Care</b>	
<b>Strategy or Program Name</b>	<b>Summary Description</b>
Financial assistance	CHI St. Luke’s – Brazosport hospital delivers compassionate, high quality, affordable health care and advocates for members of our community who are poor and disenfranchised. In furtherance of this mission, the hospital will provide financial assistance to eligible patients who do not have the capacity to pay for medically necessary health care services, and who otherwise may not be able to receive these services.
Flu shots	Free flu shots will be offered at a number of community venues.
Health fairs	Health fairs will provide health information on accessing needed health services and living a healthy lifestyle. Preventive screenings will be offered at the health fairs.

**Anticipated Impact:** Increase access and reduce barriers to health care for the medically underserved.

**Planned Collaboration:** St. Luke’s Brazosport anticipates collaborating with the following facilities and organizations to address this priority need: Baylor School of Medicine, Susan G. Komen Foundation, American Cancer Association, Brazosport College, Community Health Network and Brazosplace.



### Health Need: Chronic Disease (including Overweight and Obesity)

Strategy or Program Name	Summary Description
Community health education	Community education will be offered to the community free of charge and will address a variety of chronic disease-related health care topics. Education programs will include: weight loss, high blood pressure, heart disease and diabetes.
Support groups	Support groups will be offered to persons with chronic disease conditions, their families and caregivers.
Mermaid Project	The Mermaid Project is a local initiative dedicated to transforming potential breast cancer victims into survivors. To meet this goal, the Project provides free breast cancer screening and treatment to qualifying low-income, uninsured men and women living in Southern Brazoria County.
Health fairs	Health fairs will provide health information on disease prevention and treatment, healthy eating and living a healthy lifestyle. Preventive screenings for chronic diseases will be offered at the health fairs.
Dietician consultations	Dietitians will offer healthy eating consultants to community members.

**Anticipated Impact:** Increase identification and treatment of chronic diseases and improve compliance with chronic disease prevention and management recommendations.

**Planned Collaboration:** St. Luke’s Brazosport anticipates collaborating with the following facilities and organizations to address this priority need: Baylor School of Medicine, Susan G. Komen Foundation, American Cancer Association, Health South Texas.



### Health Need: Mental Health

Strategy or Program Name	Summary Description
Community health education	Community education will be offered to the community free of charge and will address mental health care topics, including providing resources for community mental health services.

Mental health awareness activities	The hospital will actively seek out partnership opportunities with CHI/CommonSpirit hospitals and community mental health organizations, and will join in community efforts to increase the understanding of mental health issues and provide access to resources.
------------------------------------	--

**Anticipated Impact:** Increase awareness and treatment of mental health issues

**Planned Collaboration:** St. Luke’s Brazosport anticipates collaborating with the following facilities and organizations to address this priority need: Baylor School of Medicine, Brazos County Health Department, NAMI Gulf Coast, Brazoria County Mental Health Division, and school districts.



### Health Need: Preventive Practices (including COVID-19)


Strategy or Program Name	Summary Description
Flu shots and immunizations	Free flu shots and immunizations will be offered at a number of community venues.
Health fairs	Health fairs will provide health information on accessing needed health services, preventing disease and living a healthy lifestyle. Preventive screenings will be offered at the health fairs.
Screenings	Community screenings, including COVID-19 testing, to detect diseases and acute and chronic health issues.

**Anticipated Impact:** Increase the identification and treatment of disability and disease and increase individuals’ compliance with preventive care recommendations.

**Planned Collaboration:** St. Luke’s Brazosport anticipates collaborating with the following facilities and organizations to address this priority need: Baylor School of Medicine, Brazos County Health Department, area hospitals and Live Oak Clinic.

# Program Digests

The following pages include Program Digests describing key programs and initiatives that address one or more significant health needs in the most recent CHNA report. The digests include program descriptions and intervention actions, statements of which health needs are being addressed, any planned collaboration, and program goals and measurable objectives.

 <b>Mermaid Project</b>	
Significant Health Needs Addressed	<input type="checkbox"/> Access to health care <input checked="" type="checkbox"/> Chronic disease (including overweight and obesity) <input type="checkbox"/> Mental health <input type="checkbox"/> Preventive practices (including COVID-19)
Program Description	<p>The Mermaid Project is a local initiative dedicated to transforming potential breast cancer victims into survivors. To meet this goal, the Project provides free breast cancer screening and treatment to qualifying low-income, uninsured men and women living in Southern Brazoria County. CHI St. Luke's Health Brazosport works closely with Brazosport Medical Center in Freeport to provide a medical home for Mermaid Project patients.</p>
Community Benefit Category	A2. Community-based clinical services
Planned Actions for 2021 - 2022	
Program Goal / Anticipated Impact	Reduce the impact of cancer on health and increase the focus on early detection, prevention and treatment education.
Measurable Objective(s) with Indicator(s)	The Mermaid Project will serve 20 low-income women with breast cancer on an annual basis.
Intervention Actions for Achieving Goal	<p>Offer health education and outreach focused on cancer prevention and treatment that will increase awareness of cancer survivorship.</p> <p>Provide cancer support resources for persons with cancer, their families and caregivers.</p>
Planned Collaboration	St. Luke's Brazosport anticipates collaborating with: Brazosport Medical Center in Freeport, American Cancer Society, Susan G. Komen Foundation



## Health Fairs

Significant Health Needs Addressed	<input checked="" type="checkbox"/> Access to health care <input checked="" type="checkbox"/> Chronic disease (including overweight and obesity) <input type="checkbox"/> Mental health <input checked="" type="checkbox"/> Preventive practices (including COVID-19)
Program Description	The hospital will participate in community health fairs. The health fairs will provide health information on accessing needed health services, preventing disease and living a healthy lifestyle. Preventive screenings will be offered at the health fairs.
Community Benefit Category	A1. Community health education
<b>Planned Actions for 2021 - 2022</b>	
Program Goal / Anticipated Impact	Increase access to clinical preventive services, health education, and screenings to reduce death, disability and disease.
Measurable Objective(s) with Indicator(s)	Annually participate in a minimum of two health fairs. Provide health care information and access to resources to 750 people.
Intervention Actions for Achieving Goal	Identify community health fair opportunities focused on priority health needs. Provide health information, connect residents with needed resources, offer preventive screenings to health fair participants.
Planned Collaboration	St. Luke’s Brazosport anticipates collaborating with: Baylor School of Medicine, Susan G. Komen Foundation, American Cancer Association, Brazosport College, Community Health Network, Brazos County Health Department and Brazosplace.



## Mental Health Awareness Activities

Significant Health Needs Addressed	<input type="checkbox"/> Access to health care <input type="checkbox"/> Chronic disease (including overweight and obesity) <input checked="" type="checkbox"/> Mental health <input type="checkbox"/> Preventive practices (including COVID-19)
Program Description	The hospital will actively seek out partnership opportunities with CHI/CommonSpirit hospitals and community mental health organizations and will join in community efforts to increase the understanding of mental health issues and provide access to resources.
Community Benefit Category	A1. Community health education E3. In-kind donations
<b>Planned Actions for 2021 - 2022</b>	
Program Goal / Anticipated Impact	Increase access to mental health care resources and services.
Measurable Objective(s) with Indicator(s)	Reach 1,000 persons with suicide prevention awareness messaging and resources. Join with five area partners to engage in a community-wide mental health discussion.
Intervention Actions for Achieving Goal	Identify and engage community partners who are interested in improving mental health services. Implement a mental health community program to deliver a suicide prevention curriculum in conjunction with local schools and community mental health services. Support community organizations that provide mental health services.
Planned Collaboration	St. Luke's Brazosport anticipates collaborating with: Baylor School of Medicine, Brazos County Health Department, NAMI Gulf Coast, Brazoria County Mental Health Division and school districts.

## Hospital Board Roster

Anne Bartlett (Vice-Chair)

Brooks Bass (Immediate Past Chair)

Stephanie Herrera, M.D.

Ranelle Hampy (Treasurer)

Kevin Rittger, M.D.

Earl Shipp

Ravi Singhania (Chair)

Liz Youngblood

